

■Aspartame

Introduction

Aspartame is a high intensity sweetener also identified as N-L-alpha-Aspartyl-L-phenylalanine-1-methyl ester. It is a dipeptide composed of two amino acids, L-aspartic acid and L-phenylalanine. These constituents are found in everyday foods and are metabolized by the human body. Aspartame has a clean sweet taste that is approximately 200-300 sweeter than sugar. It is ratified for use in over 130 countries and regions around the world. Aspartame can be found in over 4000 different types of food and beverages.

Ingredient

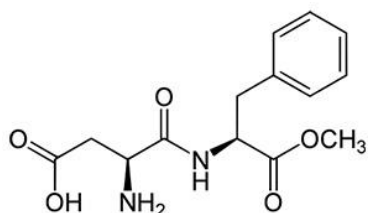
Chemical Name N-L-alpha-Aspartyl-L-phenylalanine-1-methyl ester

CAS 22839-47-0

MF C₁₄H₁₈N₂O₅

MW 294.31

MS



Item and Standard

ITEM	UNIT	STANDARD
Appearance		White Crystal or Crystalline Powder
Purity (On dry basis)	%	98.0 % ~ 102.0%
Loss on Drying (105°C 4hr)	%	≤ 4.5%
Residue on Ignition (sulfate)	%	≤ 0.2%
pH		4.5 ~ 6.0
Specific Rotation[α]		+14.5° ~ +16.5°
Arsenic		≤ 3mg/kg
Heavy Metals (as Pb)		≤ 10mg/kg
Transmittance		≥ 0.95

Application

- ▶ Fruit Juices
- ▶ Yogurt Drinks
- ▶ Hot Cocoa Mixes
- ▶ Carbonated Soft Drinks
- ▶ Confectionaries
- ▶ Table Top
- ▶ Yogurt
- ▶ Powdered Soft Drinks



Packaging

25kg

Storage

Please reading safety data sheet before carrying or using the product.
Cool and dry, keep tightly closed, quality guarantee period is two years.