

## ■ L-Leucine

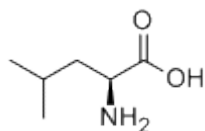
### Introduction

Product properties: L-Leucine is white crystalline powder and odorless, commonly known as Leucine, is known as one of three branch-chain amino acids. Because it is an essential amino acid, humans cannot synthesize it. This means that it must be obtained through diet or supplements. Some of the foods that contain L-Leucine include eggs, fish, chicken, lentils, almonds and cashews, among others.

Functions: L-Leucine provides many benefits to the body. It is effective for maintaining blood sugar levels and also increases growth hormone production. L-Leucine combines with isoleucine and valine to protect and provide fuel to the muscles, and also helps to increase your endurance level and boost energy. Other benefits of L-Leucine are the preservation of lean muscle mass. This amino acid helps preserve muscle tissue, so that it doesn't break down as quickly during the aging process. L-Leucine can also speed the recovery process for muscle damage and skin injuries.

### Ingredient

|              |  |
|--------------|--|
| Product Name | L-Leucine                                      |
| CAS          | 61-90-5  |
| MF           | C <sub>6</sub> H <sub>13</sub> NO <sub>2</sub> |
| MW           | 131.17   |
| MS           |  |



### Item and Standard

| ITEM   | UNIT | STANDARD                 |
|--|------|--------------------------|
| Appearance                                       |      | White crystalline powder |
| Assay  | %    | ≥98%–101.5%              |
| Specific Rotation [α] <sub>D</sub> <sup>20</sup> |      | +14.9° - +17.3°          |
| PH   |      | 5.5 - 7.0                |
| Clarification&Color                              |      | Clear, colorless         |
| Heavy Metal                                      |      | ≤15PPM                   |
| Chloride(Cl)                                     | %    | ≤0.04%                   |
| Sulfate  | %    | ≤0.03%                   |
| Iron(Fe)   |      | ≤30PPM                   |

|                     |   |            |
|---------------------|---|------------|
| Arsenic(As)         | % | ≤0.0001%   |
| Lead(Pb)            | % | ≤0.001%    |
| Loss on Drying      | % | ≤0.2%      |
| Residue on Ignition | % | ≤0.1%      |
| Aerobic Bacteria    |   | ≤1000cfu/g |
| Yeast& Mold         |   | ≤100cfu/g  |
| E.Coli              |   | Negative   |

## Application

- 1.L-Leucine is the fourth most concentrated amino acid in skeletal muscle tissue - it comprises about eight percent of the total amino acid count in your body's protein structures.
2. As one of the three BCAA's, L-Leucine is essential to your basic health. It has both athletic and medical applications.
- 3.L-Leucine maintains nitrogen balance.
4. L-Leucine also works to heal bone, skin and muscle tissue.
- 5.As a food additive, L-leucine has E number E641 and is classified as a flavor enhancer.[]



## Packaging

25KG

## Storage

Please reading safety data sheet before carrying or using the product.  
Cool and dry, keep tightly closed, quality guarantee period is two years.